

Aging in Place:

Opportunities and Challenges under
the Affordable Care Act

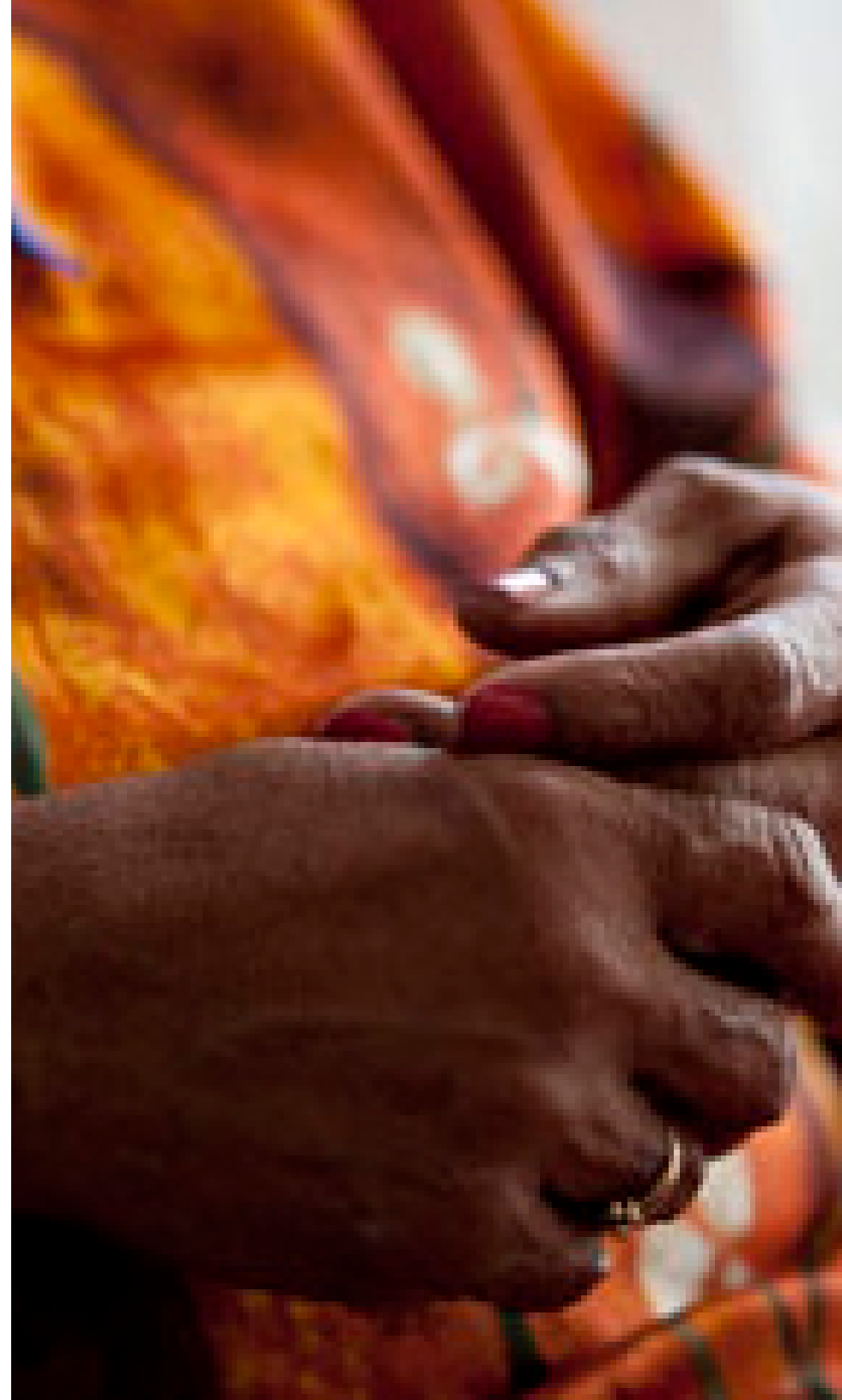
Rob Wellburn
2014 Gramlich Fellow

08.19.14

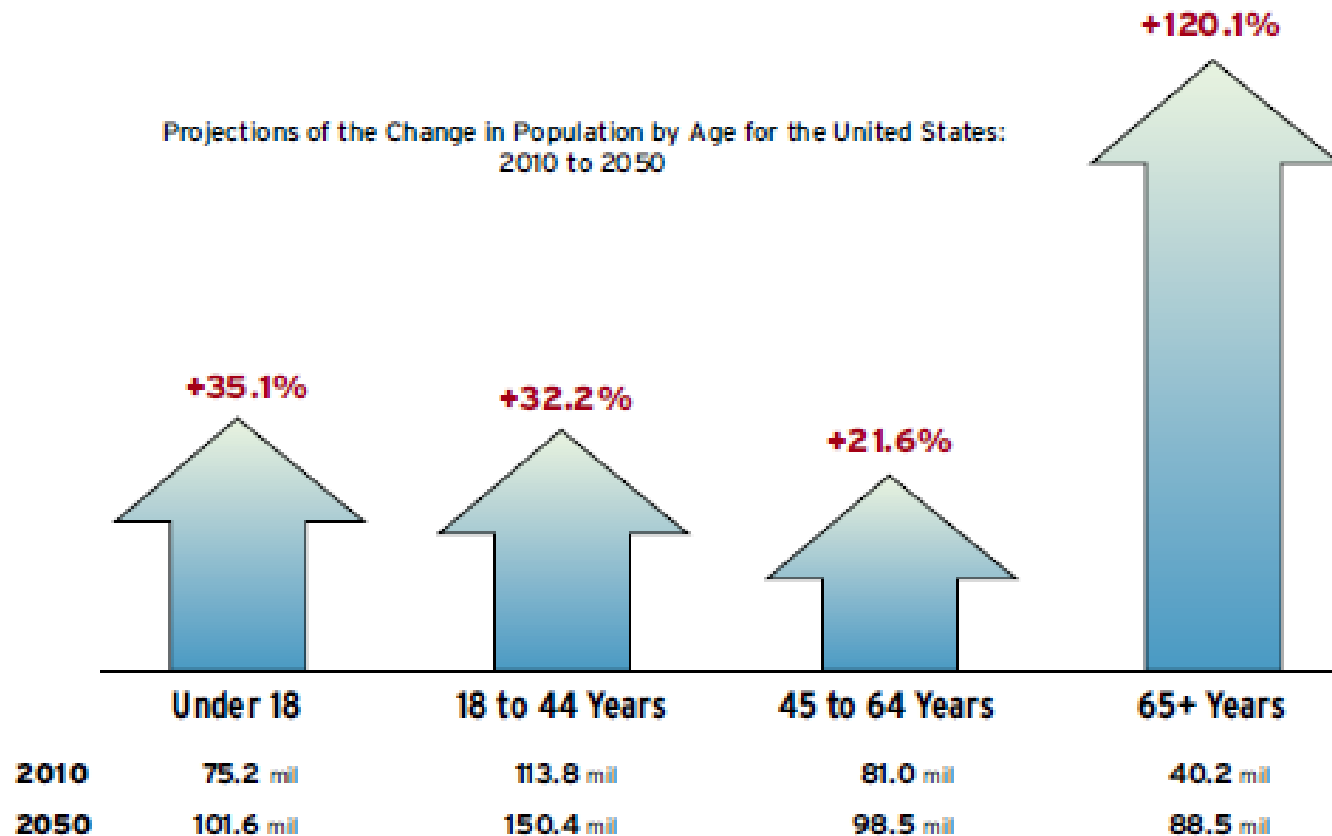
NeighborWorks America
National Training Institute Orlando



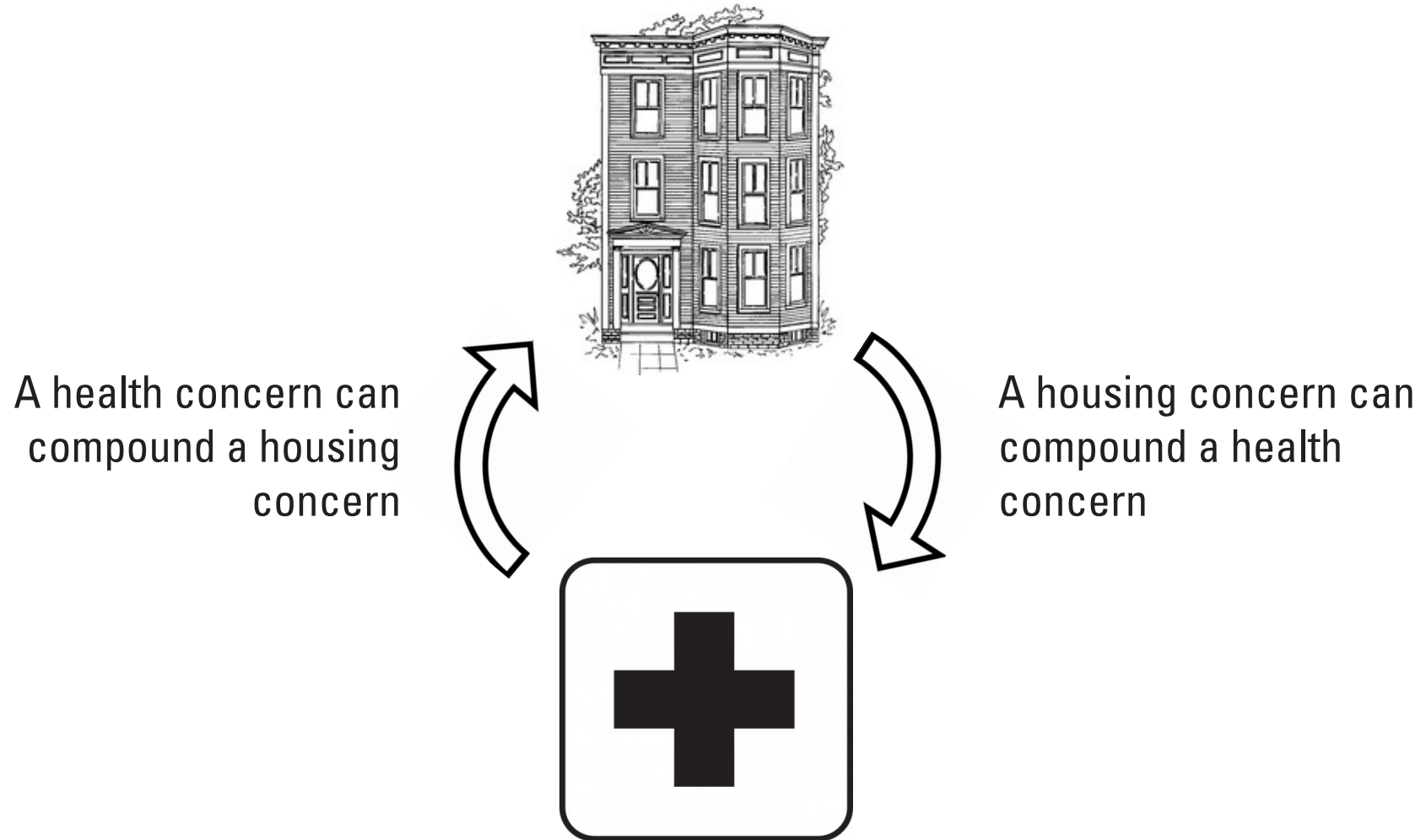
Joint Center for Housing Studies
of Harvard University



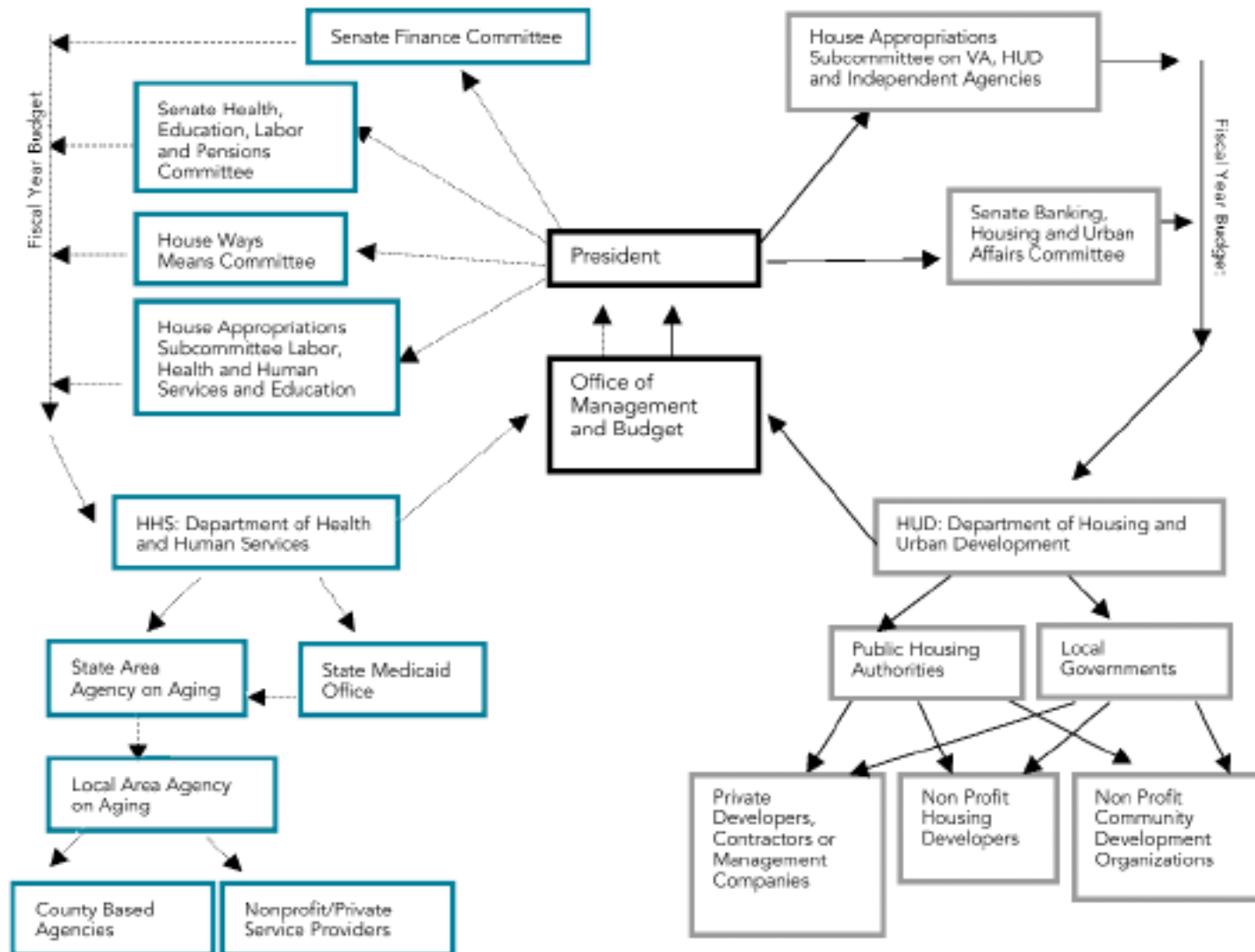
The 'silver tsunami'



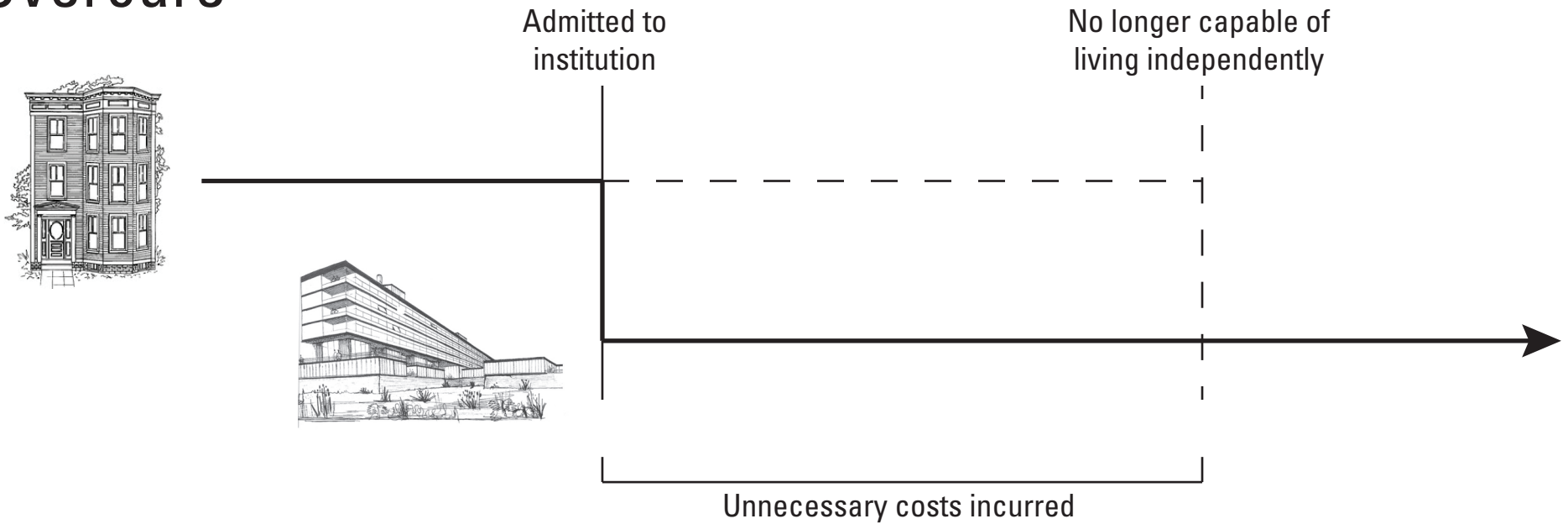
The interrelationship of housing and health



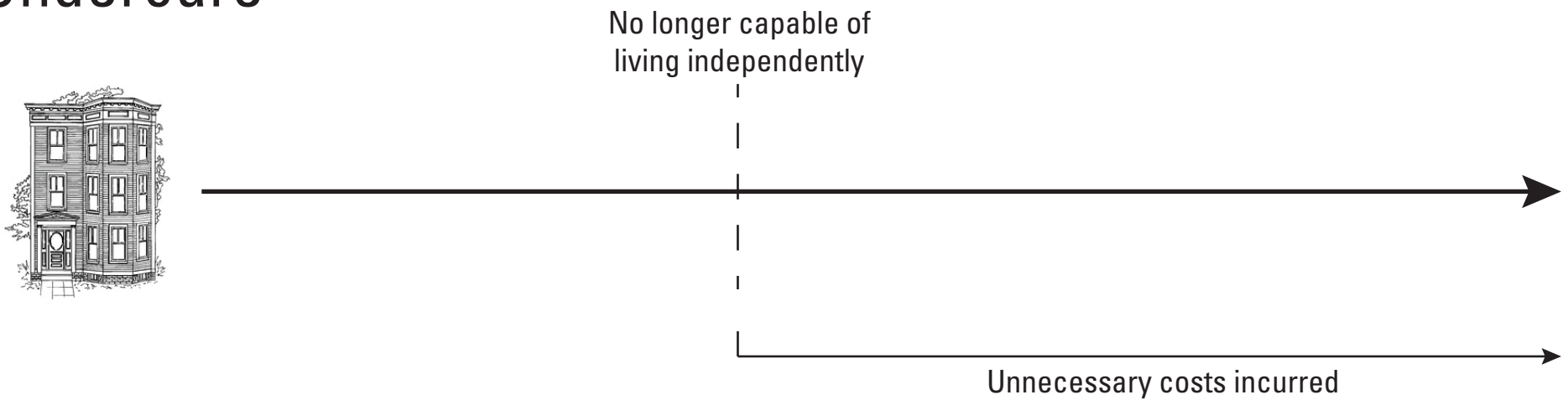
Integrating health and housing: an outdated model



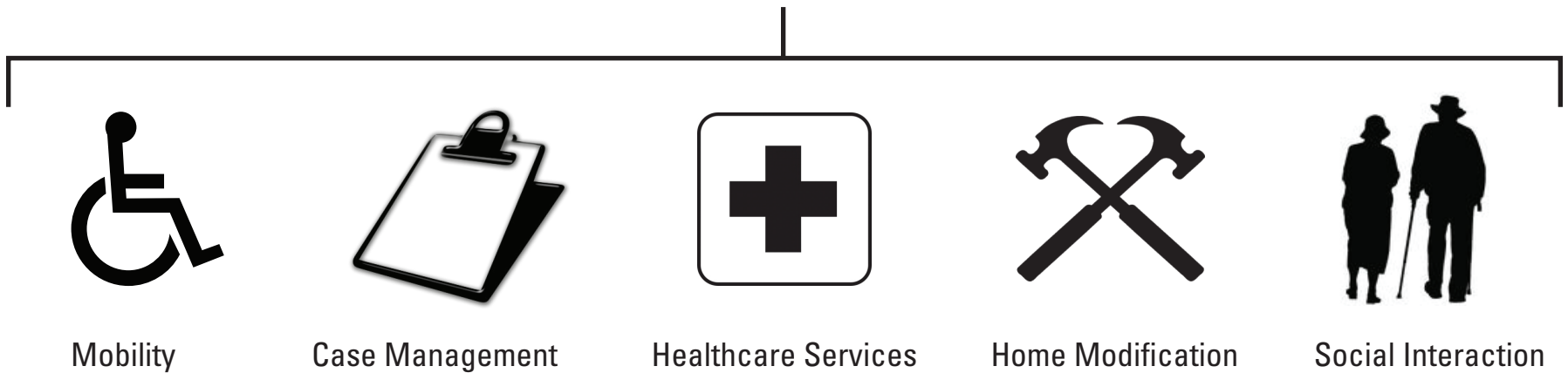
Overcare



Undercare



Aging in place: an alternative approach

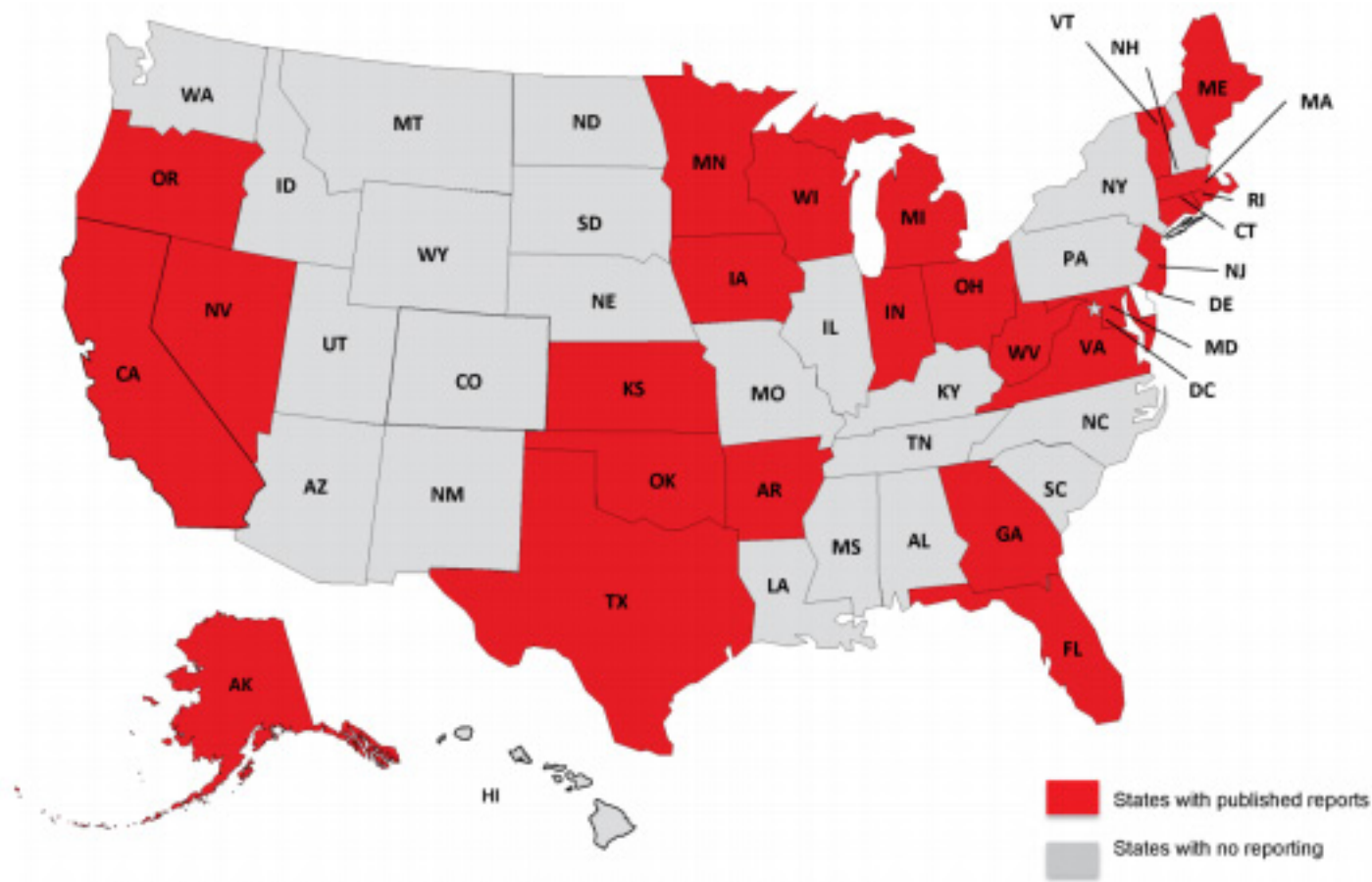


Context: Olmstead Ruling

- Olmstead v. L.C.
- June 22, 1999
- “unjustified isolation” if...
- “the State’s treatment professionals have determined that community placement is appropriate, the transfer from institutional care to a less restrictive setting is not opposed by the individual, and the placement can be reasonably accommodated”



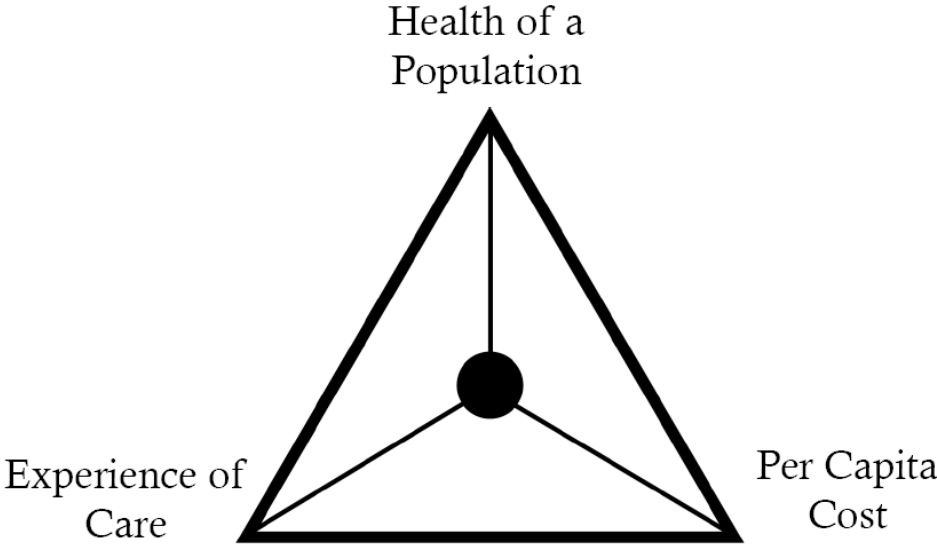
Context: evidence of cost savings



Among the 25 states with published studies, 9 states published multiple studies.

States with Published Studies Evaluating Publicly Funded Home and Community-Based Service Programs, 2005 - 2012

The Affordable Care Act



The *Triple Aim*



The Affordable Care Act

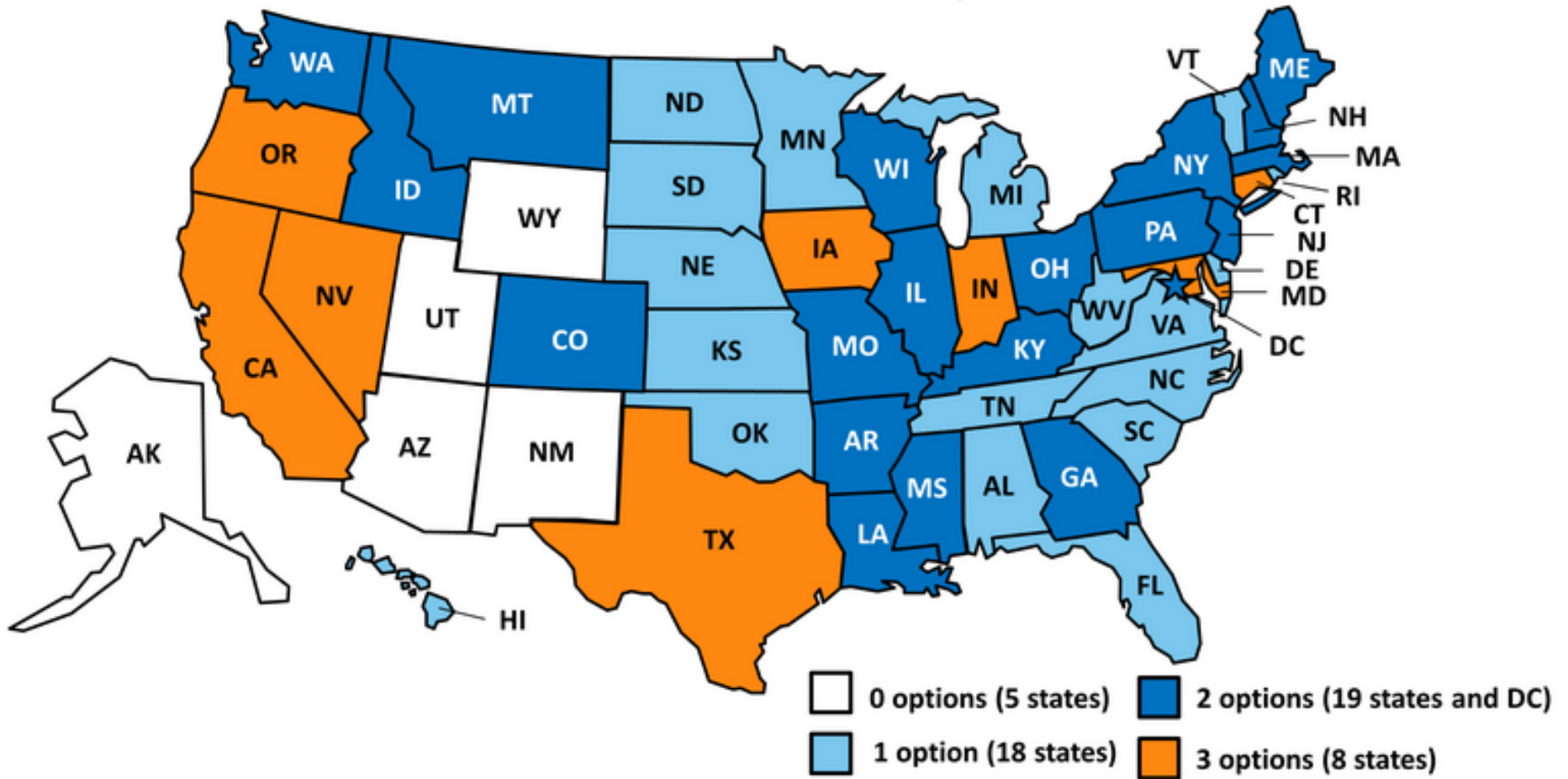
“The US health system is increasingly recognizing that, especially for people with chronic primary and behavioral health diagnoses, **housing is essential to achieving good health outcomes and controlling health care costs.**”

The Affordable Care Act and broader national health care reform **provide numerous opportunities to capitalize on that fact”**

CSH + Council of Large Public Housing Authorities
‘Opportunities for Health Partnerships through the ACA’
2014: 1



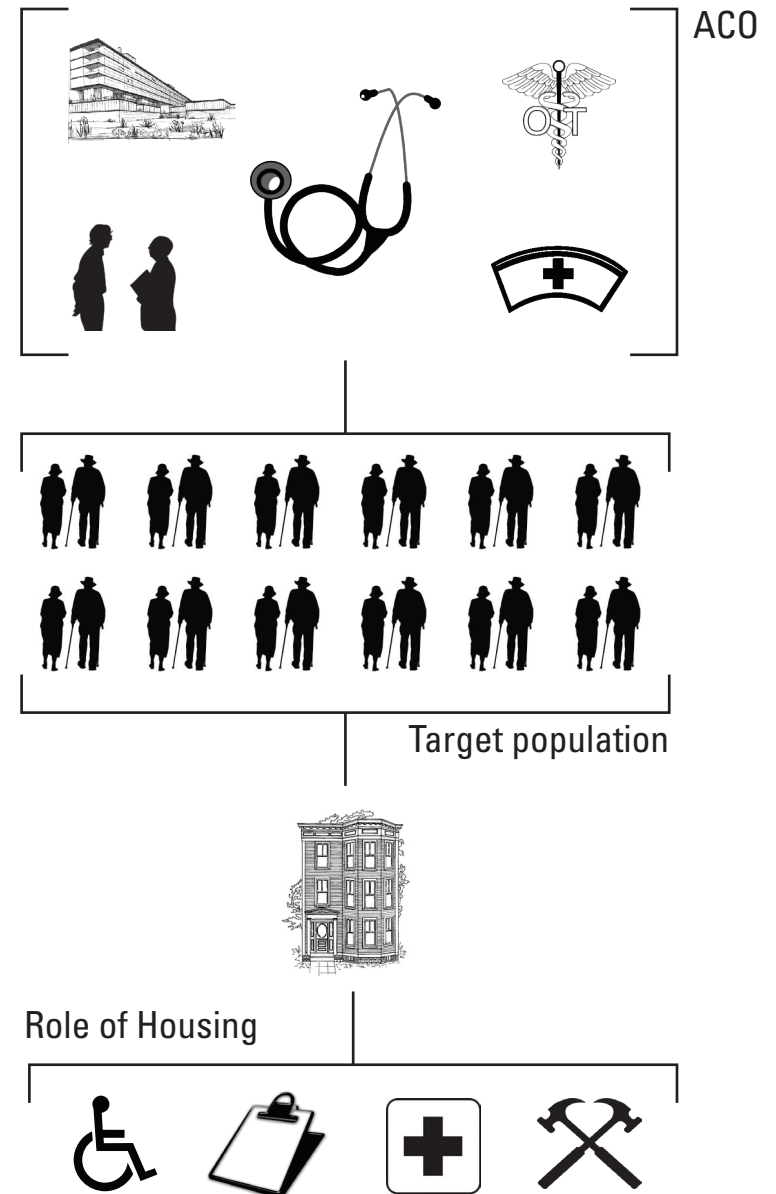
The role of states



States Pursuing Medicaid Home and Community Based Service Options Provided or Enhanced by the Affordable Care Act, July 2014

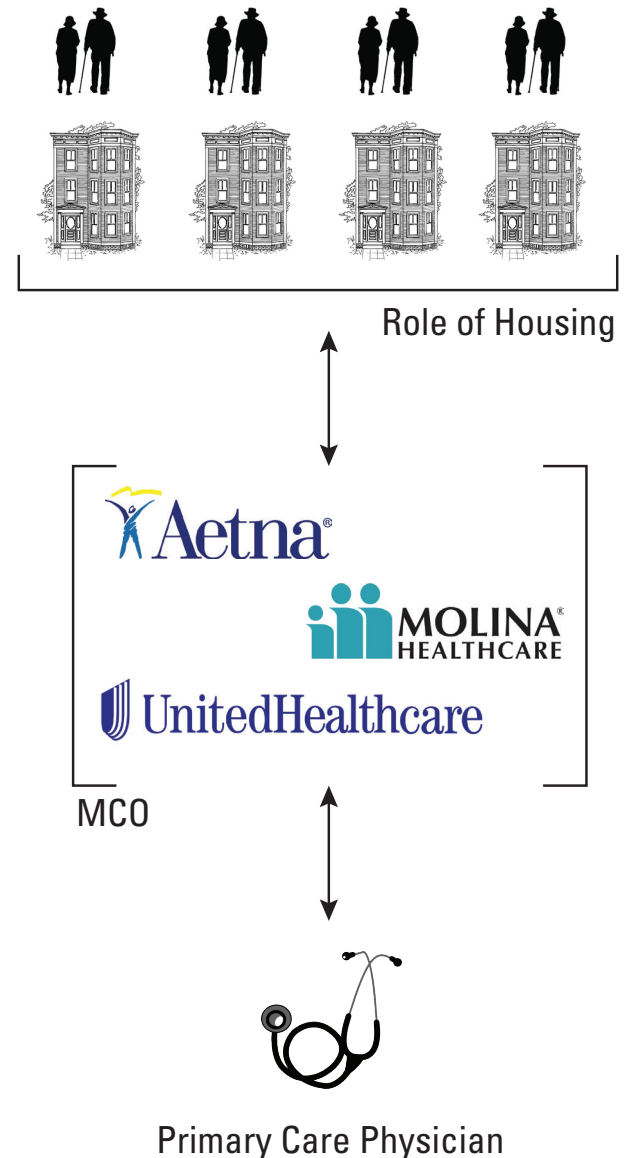
Accountable Care Organizations (ACOs)

- A network of healthcare providers centered around a primary care physician
- Incentives to coordinate service provision to provide cost-effective service delivery; the ACO shares in the savings realized to Medicare
- A 'pay-for-performance' model, rather than a 'pay-for-service' model
- Opportunities for housing providers to operate as a cost-effective platform for service delivery



Managed Care Organizations (MCOs)

- An organization, such as an insurance company, acts as the intermediate between the individual seeking care and the primary care physician
- Role for housing organizations to connect the MCO with hard to reach patients or deliver services 'in place'
- Contracts with Medicaid to include incentives (or penalties) to serve the hardest to reach patients



Managed Care Organizations (MCOs)

National Church Residences, 'Population Management Pilot'
Columbus, Ohio

- Pilot involves 500 seniors
- NCR coordinates for a primary care physician to visit the residents in their homes, performing check ups and writing prescriptions. Social workers ensure the residents follow their health plans
- Partnered with Aetna and Molina insurance companies
- Aim of the study is to demonstrate cost savings of 'in place' delivery, encouraging insurers to pay for the care on a per-participant basis, using Medicaid funds



National
Church
Residences



Center for Medicaid and Medicare Innovation

- Established to “test innovative payment and service delivery models to reduce program expenditures... while preserving or enhancing the quality of care”
- Emphasis on sharing effective practices and on replicating successful programs in other locations

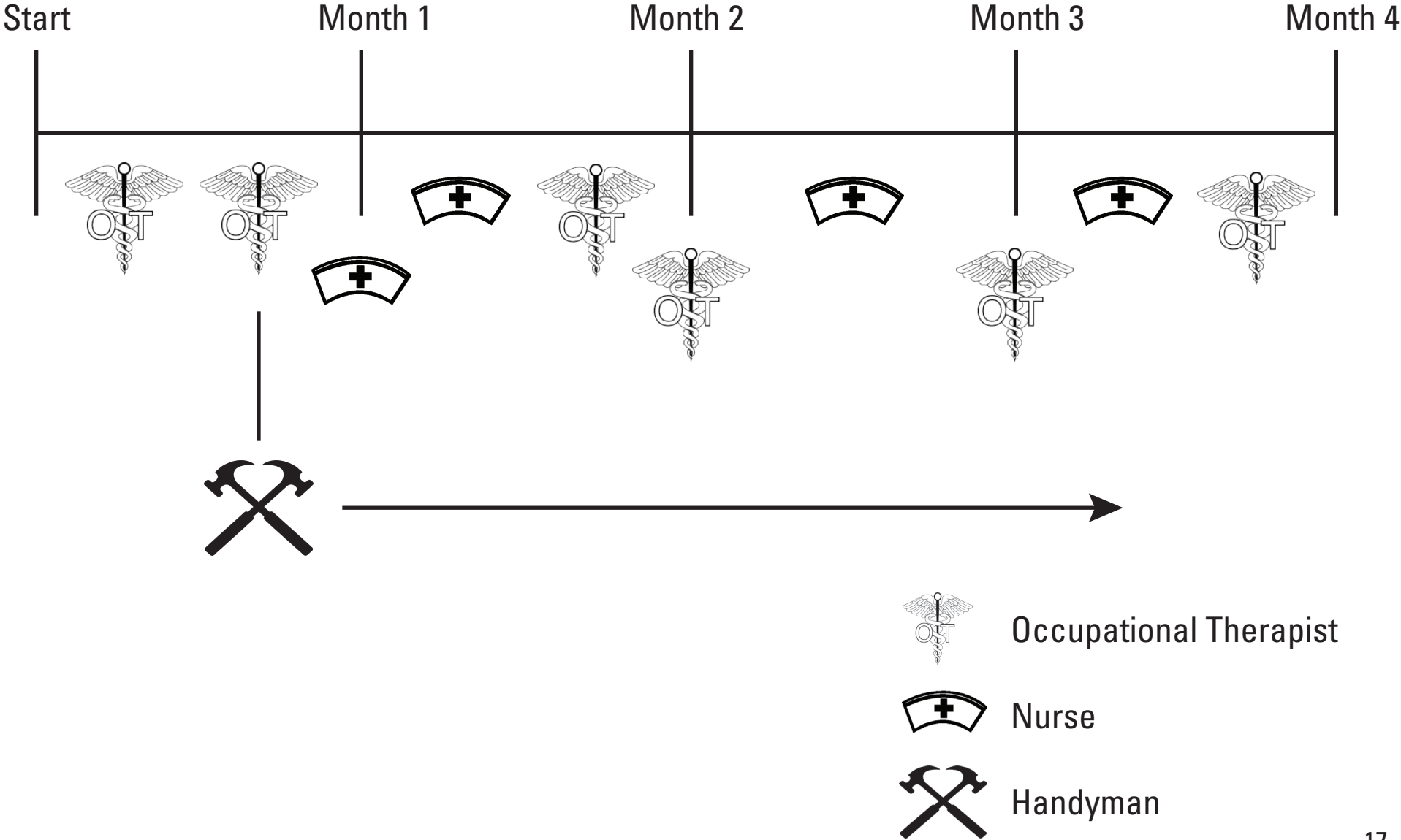


A model of success: CAPABLE

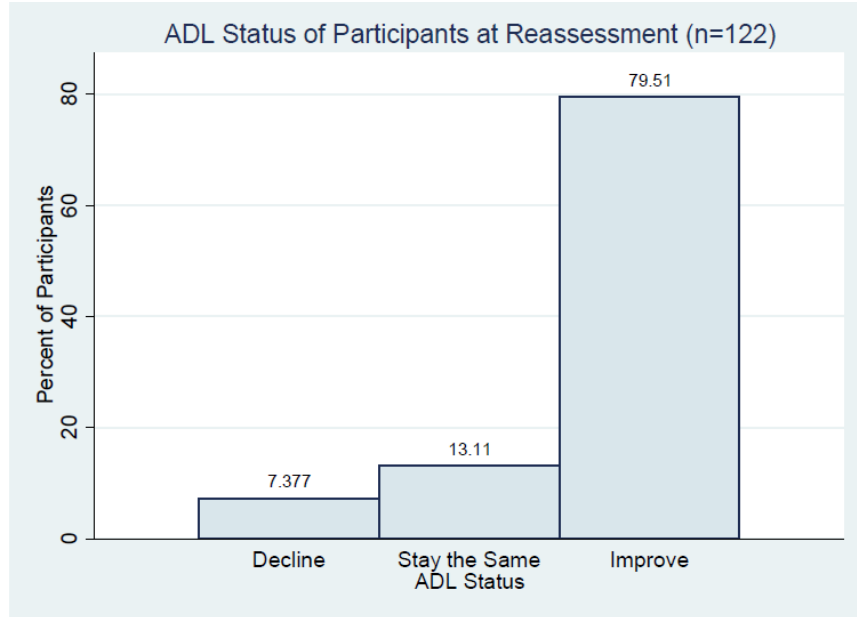
- Community Aging in Place, Advancing Better Living for Elders (CAPABLE)
- Operated by John Hopkins University School of Nursing, in Baltimore
- Pilot was launched in 2009
- A participant-centered approach focused on individual strengths, deficits, and creating goals in self-care



A model of success: CAPABLE

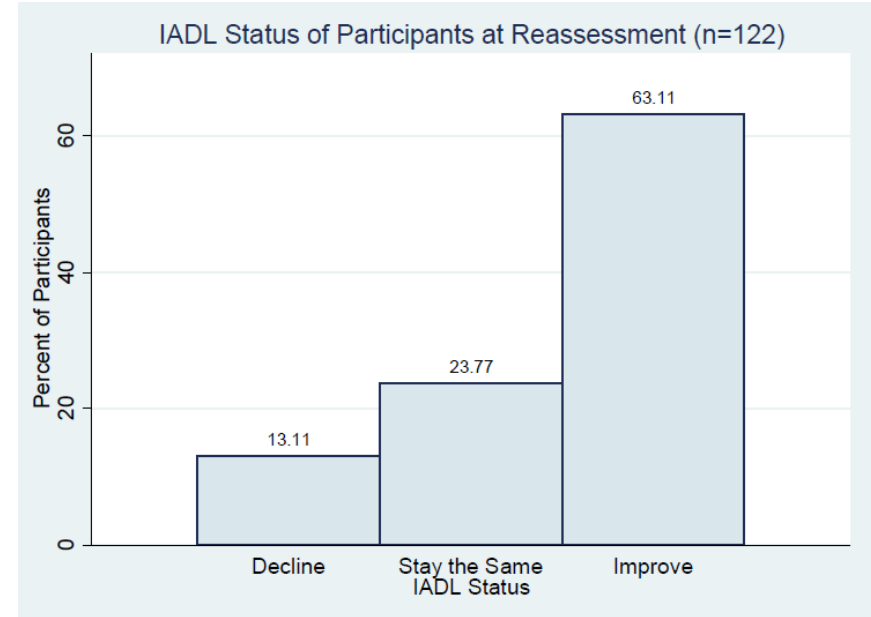


A model of success: CAPABLE



Activities of Daily Living (ADLs)

Bathing; eating; dressing; walking; grooming; using the toilet; etc



Instrumental Activities of Daily Living (IADLs)

Managing money; taking medicines as prescribed; using the telephone; shopping for groceries; etc

A model of success: CAPABLE

- Envisioning ways in which the program might be 'scaled up', including through medicaid waivers or as an ACO model
- Partnering with national institutions could help raise the program's profile, and connect CAPABLE with other potential sites for demonstrations across the country
- CAPABLE are in the early stage of such discussions - results to be determined!

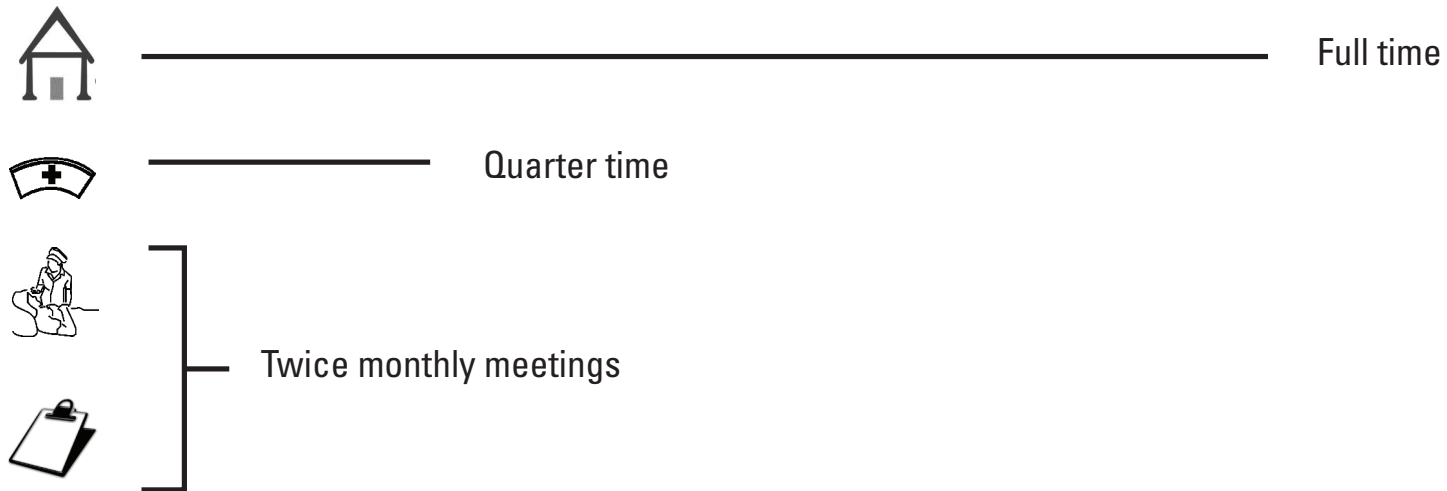
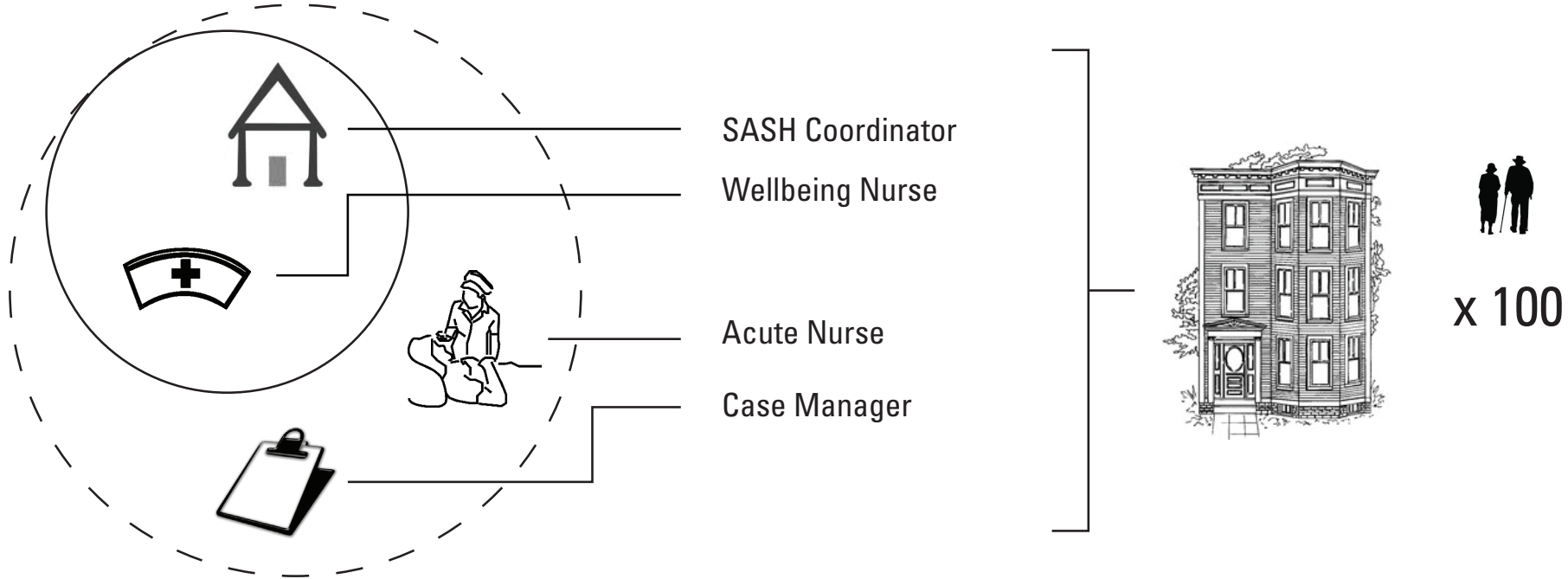


A model of success: SASH

- Support and Services at Home (SASH)
- Piloted by Cathedral Square Corporation, in Burlington, VT in 2009
- Involved collaboration with legislators, healthcare groups, and community service partners to position housing as 'service hubs' - a platform that coordinates healthcare and housing



A model of success: SASH



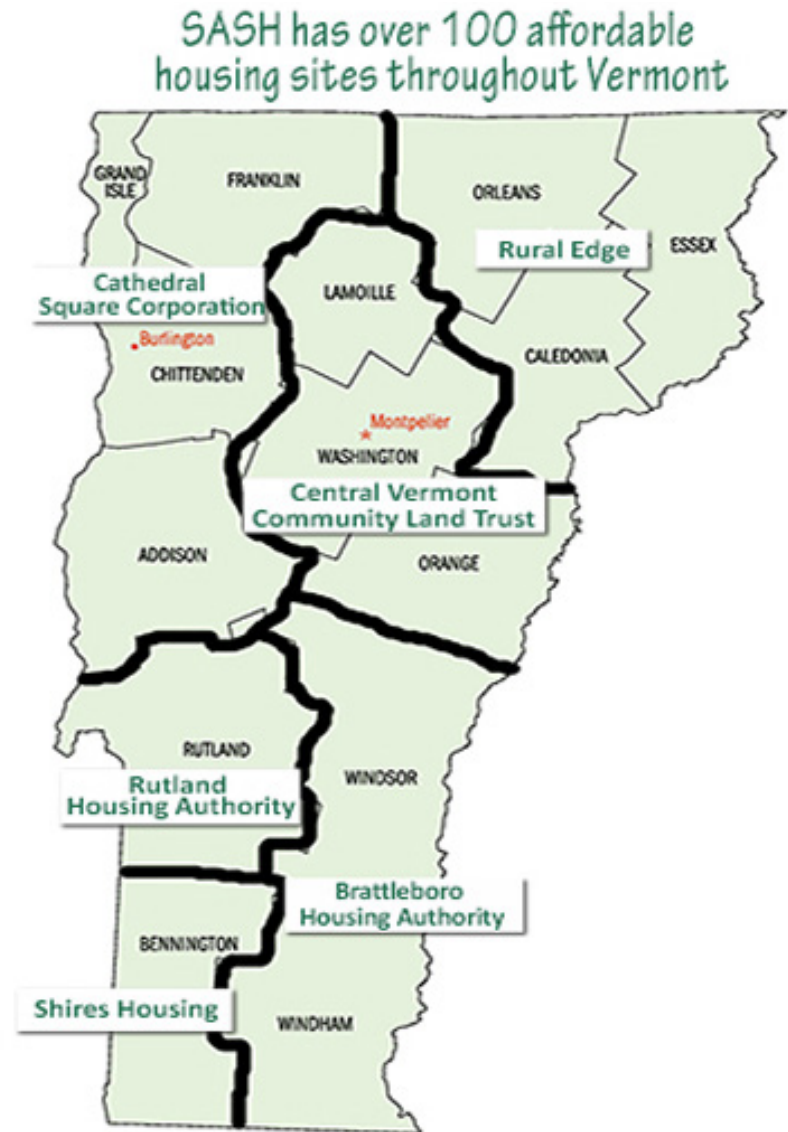
A model of success: SASH

- Hospital admissions reduced by 19%
- None of the residents moved to a nursing home
- The number of residents who experienced a fall was reduced by half
- Overall physical activity and nutrition also improved



A model of success: SASH

- Following the success of the pilot, the program has been expanded statewide
- Fully integrated within Vermont's statewide healthcare plan, 'Blueprint for Health'
- System-based approach, with a focus on being replicated elsewhere - the next step?



Beyond the ACA

What challenges remain?

1. Broadening service provision
2. Support for family care-givers
3. Overcoming federal silos
4. The need for affordable housing



Beyond the ACA

What challenges remain?

1. Broadening service provision
2. Support for family care-givers
3. Overcoming federal silos
4. The need for affordable housing



Beyond the ACA

What challenges remain?

1. Broadening service provision
2. Support for family care-givers
3. Overcoming federal silos
4. The need for affordable housing



Beyond the ACA

What challenges remain?

1. Broadening service provision
2. Support for family care-givers
3. Overcoming federal silos
4. The need for affordable housing



Aljoya Thornton, Seattle
A retrofit designed for seniors

Conclusions

- The Affordable Care Act is still in its 'implementation stage'
- Opportunities exist already to improve the livelihoods of low-income seniors, and these should be taken
- Housing organizations have the experience and knowledge to play a significant role in building partnerships with healthcare providers



Acknowledgments

Marcea Barringer / Sarah Norman / Chris Herbert / Jen Molinsky / Kathryn Lawler /
Alyssa Lassiter / Bob Zdenek / Eileen Peltier / Jessica Oh / John Niederman / Mark
Ricketts / Peggy Bailey / Connie Tempel / Sarah Szanton / Dan D'Oca / Matthew Furman

Sources

Academic

- Ball (2012) Aging in Place: A Toolkit for Local Governments, Atlanta Regional Commission + Community Housing Resource Center
- Lipman et al. (2012) Housing an Aging Population: Are We Prepared?, Center for Housing Policy
- Fox-Grage & Walls (2013) States Studies Find Home and Community-Based Services to be Cost Effective, AARP
- Reaves & Musumeci (2014) Medicaid and Long-Term Services and Supports: A Primer, Kaiser Foundation
- Szanton (2014) CAPABLE: Improving Housing and Health Together, Presentation, August 2014

Images

- 1 http://www.nw.org/network/JCHS-Logo-Left_000.jpg / https://www.chapa.org/sites/default/files/NW%20AMERICA%20LOGO%20FINAL%20copy_0.jpg / http://nursing.jhu.edu/faculty_research/research/projects/capable 7 <http://www.olmsteadrights.org/styles/images/olmstead/img02.jpg> 9 10 <http://www.scpolicycouncil.org/wp-content/uploads/2013/06/bill-signing-obamacare.jpg> / http://3.bp.blogspot.com/-P9h-QIk-cjo/TdJwq307NJI/AAAAAAAAAB0I/T_6WI6LRjKY/s1600/IHI%2BTriple%2BAim.png 14 <https://lh3.googleusercontent.com/-xrkQWgWQf5w/AAAAAAAAAAAI/AAAAAAAAAA/kWyNI3FhH3w/photo.jpg> / <http://www.nationalchurchresidences.org/services/home-and-community-services/home-health-care> 16 25 27 28 http://www.huduser.org/portal/periodicals/em/EM_Newsletter_fall_2013.pdf 19 http://www.mdmunicipal.org/images/pages/N166/AARP_485.JPG / https://www.chapa.org/sites/default/files/NW%20AMERICA%20LOGO%20FINAL%20copy_0.jpg 20 http://cathedralsquare.org/img/Updated%20SASH%20Logo_1.jpg / http://www.stpaulscathedralvt.org/sites/default/files/pictures/180_CSC_logo.gif 22 http://www.leadingage.org/uploadedImages/Images/E-Magazine/SASH_cropped-laughing-outdoor-walkers_w712px.png 23 <http://www.sashvt.org/Images/map.jpg> 24 <http://www.ncrc.org/fleeced/wp-content/uploads/2013/09/a-new-dawn.jpg> 26 <http://neweditions.net/housing/images/HCLogo.jpg>